

Plantation Prestige 2022
Commercial Furniture





Plantation Prestige

Commercial Furniture



FURNITURE

- Frames are constructed of high strength tubular aluminum and steel.
- Most all dining, side and bar seating is stackable, an excellent characteristic when furniture is stored during the off-season.
- All furniture frames are warranted by Plantation Prestige for 3 years. Please visit plantationprestige.com for more information.
- Our furniture features fully-welded frames for strength and stability.
- Metal furniture is electrostatically powder coated to resist corrosion, chipping, scratching and ultraviolet rays.



UMBRELLAS

- We offer several sizes of umbrellas, as well as a cantilever with a complete 360°.
- Umbrella bases to fit almost any need – portable, in ground, free standing, etc – are available.
- Umbrellas come with either Sunbrella® or Recacril® fabrics. Both are solution dyed fabrics, made to handle the outdoor elements.
- Customization of umbrellas is available using your choice of fabrics or by adding your logo for optimal visibility.



DEEP SEATING

- All deep seating furniture is made of aluminum frames, which will not rust when used in the outdoor environment.
- Our pieces are wrapped in an all-weather wicker, which is a strong polymer, specifically designed for outdoor use.
- All cushions are made with Sunbrella® fabric, and can be customized to match your color scheme.
- Most of our deep seating collections will have accompanying tables and chairs.
- All of our frames are warranted by Plantation Prestige for 3 years. Please visit plantationprestige.com for more information.



ADDITIONAL PRODUCTS

- **Benches** – Multiple bench options are available to complete your outdoor needs.
- **Waste Receptacles** – Coordinating fully steel option with rain bonnet.

Plantation Prestige Commercial Furniture is proud to offer our line of commercial and hospitality furnishings. Plantation Prestige Commercial Furniture is dedicated to providing superior quality furnishings to the commercial and hospitality industry with a commitment to Design, Quality, Service and Execution. Plantation Prestige Commercial Furniture brings years of experience at making quality outdoor furniture to the commercial and hospitality market.

We are dedicated to providing fresh innovative designs that meet the space and aesthetic needs of our customers. Plantation Prestige Commercial Furniture has an in-house design team with many years of design and fabricating experience. We travel the world for design inspiration and have the capability to design custom products to fit your needs.

We are proud to introduce our 2022 line and look forward to servicing your furniture needs.





All Steel Frame Collections

Caredo (pictured left)

The Caredo dining chair offers great lumbar support for comfort and is stackable for easy out of the way storage. Is stylish and durable, will stand the test of time in any commercial setting.

* This collection is stackable!
Offered in charcoal and bronze finishes



2171100-04
Dining Chair
25D x 24W x 35.5H



2170300-04
Bar Stool
33D x 24W x 51H

Benson and Rockport

These two collections are similar with a stylish rounded back, and comfortable breathable seating for any outdoor area. Benson comes in dining chair and Rockport has both dining chair and barstool.

* This collection is stackable!
Offered in charcoal and platinum



2181100-04
Benson Dining Chair
21.5D x 22W x 35H



2041100-04
Rockport Dining Chair
26D X 22W x 33H



2040300-02
Rockport Bar Stool
26D X 22.5W x 45H

Montana

The Montana side chair and dining chair offer a waterfall front edge design for a more comfortable feel when sitting in these pieces. The Montana seating collection is a grand combination of durability, comfort and style.

* This collection is stackable!
Offered in charcoal and bronze finishes



2021100-04
Dining Chair
22W x 21D x 33H



2020700-04
Side Chair
19W x 21D x 33H

NEW for 2022



All Aluminum Frames Collection

Cayman (pictured left)

A timeless classic design featuring a variegated resin weave, stylish and traditional for any outdoor setting. Great for any outdoor area especially along the coast or more tropical regions. The all-aluminum frame has a hand applied finish, giving the appearance of wood, but in fact is metal and withstand the outdoor elements very well. Chairs are stackable, making it easy to store away when needed.

* This collection is stackable!

Custom colors available in container quantities. Just ask your sales rep for details!



2140700-0480
Side Chair
22D x 17.5W x 34H
Coffee & Beige



2140700-0470
Side Chair
22D x 17.5W x 34H
Back & White



2140300-02
Bar Stool
22D x 18W x 45H
*Barstool available
in Coffee & Beige and
Black & White!

Antigua

A sophisticated design featuring an all-aluminum frame with black textilene fabric for a comfortable seat and back. Textilene is an open weave, highly durable outdoor material, with built in UV stabilizers, allowing the fabric to breathe the sunlight. Makes fabric a cool seat to sit on and withstand the test of time for many years. Chairs are stackable, making it easy to store away when needed.

* This collection is stackable!
Cappuccino with black textilene



2130700-0480
Side Chair
22D x 17.5W x 34H



2130300-0280
Bar Stool
22D x 18W x 45H

Stackable

When we say our chairs are stackable, this means they will fit together easily for out of the way storage, taking up as little space as possible for your convenience. Within each collection, we have noted if the chairs are stackable.





Durango

The Durango is a refined rustic collection, featuring a faux wood with an aluminum frame. Not only does it have a classic slat, but combines a curved ergonomic design for comfortable seating. It's handsome presence still affords a light-weight, stackable chair for easy storage.

* This collection is stackable!
 Gunmetal frame with grey faux wood slats
 Platinum frame with teak faux wood slats
 Bronze frame with teak slats
 Black frame with barnwood slats
 Black frame with tri-color slats
 * This collection has coordinating tables shown on pages 14-15



8771100-04
 Dining Chair
 23D X 23W X 36H



8770700-04
 Side Chair
 23D X 18.5W X 36H



8770310-02
 Backless Bar Stool
 16D X 13W X 28H



8770300-02
 Bar Stool
 23D X 18.5W X 47H

Durango Weave

The Durango Weave is an appealing addition to our Durango collection. The aluminum frame encompasses an elegant all-weather weave to give the chair texture and design. This collection would look great with the Durango tables shown on page 14-15.

- * This collection is stackable
- * Offered in grey weave/gunmetal frame



8761100-0455
Dining Chair
23D X 23W X 36H



8760700-0455
Side Chair
23D X 18.5W X 36H



8760300-0255
Bar Stool
23D X 18.5W X 47H



Black Frame/Barnwood (51)



Bronze Frame/Teak Faux Wood (53)



Gunmetal Frame/Grey Faux Wood (55)



Platinum Frame/Teak Faux Wood (57)



Black Frame/Tri-Color (59)



Durango Deep Seating

The Durango Deep Seating collection is designed to create a comfortable option, styled in a modern, yet subtle grey wicker to upgrade your outdoor space. Each seating piece fastens easily to another, offering multiple configurations to furnish your outdoor area accordingly. The Durango Deep Seating pieces are constructed of an all-weather woven wicker, wrapped around an all-aluminum, highly durable frame for the outdoors. * Sunbrella® cushions included with limited colors available for an upcharge (ask your rep for more information). Shown in Canvas Granite.



Right Hand Section
8770500-015402
37.4D X 29.5W X 34.6H



Corner Section
8770100-015402
37.4D X 37.4W X 34.6H



Left Hand Section
8770400-015402
37.4D X 29.5W X 34.6H



Middle Section
8770200-025402
37.8D X 25.8W X 34.6H



Double Chaise Lounge
8770800-01
84D x 61.5W x 36H



Wicker End Table
8771836-0155
18D X 36W X 17H



Wicker Coffee Table
8772746-0155
27D X 46W X 17H



Lounge Chair
8770600-01
37D x 34W x 35H



Chaise Lounge
8770900-025402
81D x 29W x 21H



Durango Coffee Table
8772747-01
27D X 47W X 18H



Durango Side Table
8772121-01
21D X 21W X 18H

Key Largo

The timeless design of classic wicker has been recreated with our beautiful Key Largo deep seating. Made of a woven all-weather resin, and crafted into a unique arrangement, with many seating possibilities. Beauty and functionality at its best with built-in storage within the armrest, and each piece is sold separately to meet your outdoor needs. Shown here with our Charleston Fire Table. Fully equipped with gas burner and storage for propane tank. Simple turn of the dial to illuminate your outdoor area.

* Sunbrella® cushions included with limited colors available for an upcharge (ask your rep for more information).

Shown here in Sesame Linen.

* Decorative pillows not included



Triangular Storage Section
(with storage)
8782134-01
34D x 21W x 32H



Curved Sectional
8780200-02
34D x 47W x 32H



Charleston Fire Table
8742500-01
47W x 27H



Corner Section
8790100-01
35D x 35W x 34H



Middle Section
8790200-02
35D x 31W x 34H



Coffee Table
8794040-01
40D x 40W x 20H

Savannah

The new Savannah collection is designed with a hand-woven, all-weather wicker that won't fade or split, leaving you with a worry-free solution all year long. The frame is constructed of commercial grade tubular aluminum, therefore rust free and lighter weight for easier mobility. This collection affords you many options and varieties within your outdoor seating space.

The aluminum chat table has a durable finish that mimics a rich wood stain.

- * Sunbrella® cushions included with limited colors available for an upcharge (ask your rep for more information). Shown here in Henna.
- * Decorative pillows not included.





Santa Cruz

The new Santa Cruz collection is designed using the latest in color schemes for the new year – Greystone and barnwood. It is made with a hand-woven, all-weather wicker that won't fade or split, leaving you with a worry-free solution all year long. The frame is constructed of commercial grade tubular aluminum, therefore rust free and lighter weight for easier mobility. This collection, complete with has so many possibilities that can certainly fill any outdoor space.* Sunbrella® cushions included with limited colors available for an upcharge (ask your rep for more information). Shown here in Cast Shale.





Right Hand Section
8562500-0240432
31.5D x 60W x 28H



Left Hand Section
8562400-0240432
31.5D x 60W x 28H



Corner Section
8560100-0140432
31.5D x 31.5W x 28H



Middle Section
8560200-0240432
31.5D x 27W x 28H



Lounge Chair
8560600-0140432
30.7D x 31.5W x 28H



Coffee Table
8563737-0156
37D x 37W x 18H



Side Table
8562020-0156
19D x 19W x 22H



Dining Chair
8561100-0240432
25D x 23W x 33H



Dining Table
8563535-0156
35D x 35W x 29H



Dining Table
8563970-0156
70D x 39W x 29H



Tables / Durango Collection |



Durango Dining Tables
8773053-01 • 30D x 53W x 29H
with umbrella hole

Durango finish options:
gunmetal frame / grey faux wood
platinum frame / teak faux wood
bronze frame / teak faux wood
black frame / barnwood faux wood
black frame / tri-color faux wood



Durango Bar Table
8773333-01
33D x 33W x 40H
with umbrella hole



Durango Bar Height Table
8773361-01 • 33D x 61W x 40H
with umbrella hole



Durango Community Table
8773076-01 • 30D x 76W x 29H
with umbrella hole



Durango Pic-Nic Table
8882548-01
available in black / barnwood
gunmetal / grey
black / tri-color
Table Top 25D x 48W
Attached Bench 10D x 48W
Overall 62"W x 48"D
with umbrella hole

NEW for 2022



Durango Dining Tables
8773030-01 30Dx30Wx29H
8773737-01 37D x 37W x 29H
with umbrella hole



Durango Pic-Nic Table
8883072-01
available in black / barnwood
gunmetal / grey
black / tri-color
Table Top 30D x 72W
Attached Bench 15D x 72W
Overall 72"W x 77"D
no umbrella hole

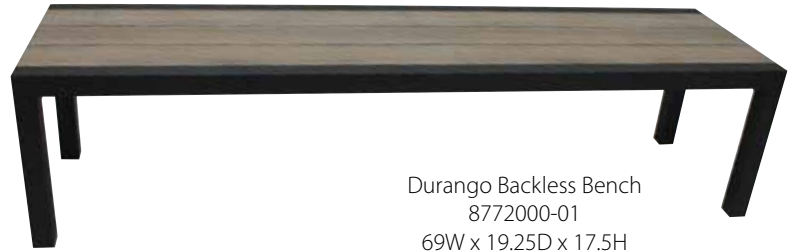
Tables / Durango Collection |



Durango Round Table
8773600-01
36" round x 29H
8775000-01
50" round x 29H
with umbrella hole
Use only with
umbrella base 2239850



Durango Bench with Arms
8772100-02
77.5W x 23D x 35H



Durango Backless Bench
8772000-01
69W x 19.25D x 17.5H



Custom Solid Acrylic Table Tops

Plantation Prestige is pleased to offer a new composite, solid acrylic table top. These molded table tops are a great choice wherever durability, attractive appearance & performance are desired to enhance the outdoor seating space. These high quality commercial grade, solid acrylic tops are custom made in various sizes and colors, made to withstand the elements of the outdoor environment. Please contact your local sales representative for further details to place an order.

Features:

- Nonporous surface to keep dirt or contaminants from penetrating the top, makes top easy to clean
- Consistent color through the material thickness for maintaining an attractive appearance
- High resistance to UV fading in intense sun locations
- Resistance to freeze-thaw cycles

- 2413000 • 30" round
- 2413030 • 30" x 30"
- 2413600 • 36" round
- 2413636 • 36" x 36"
- 2413048 • 30" x 48"

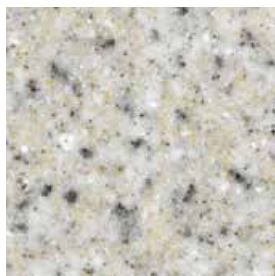
- For 30" table tops, use base 2342700 or 2332700
- For 36" table tops, use base 2343700 or 2333700
- For 30" x 48" table top, use base 2353048

See table bases on page 17

Custom sizes available. Please contact your sales rep for details. Umbrella holes optional.



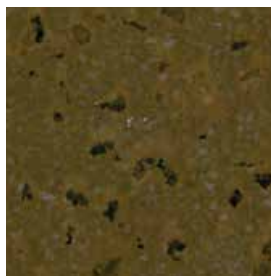
Acrylic Top Options



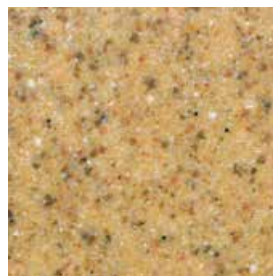
Brown Matrix (02)



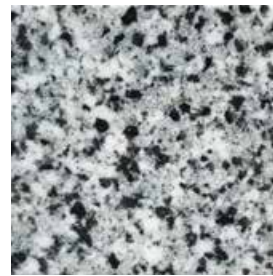
Brownstone (03)



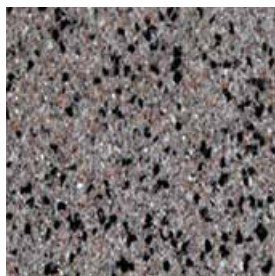
Cocoa (04)



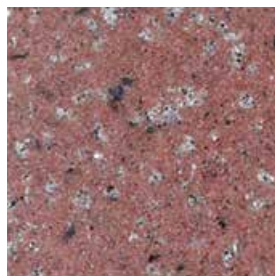
Golden Oak (05)



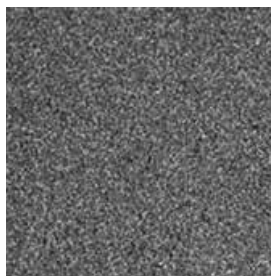
Black Matrix (06)



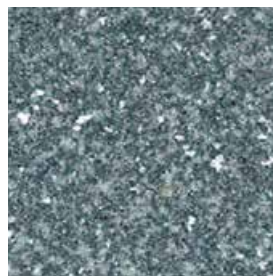
Lynne Star (07)



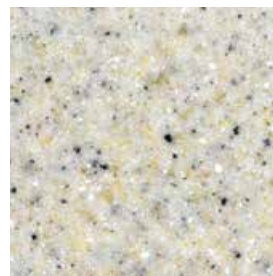
Pezza (08)



Riverstone (09)



Sueillia Green (11)



Wheat (12)

Build Your Own Table

Plantation Prestige Commercial Furniture offers a wide variety of customizable table options that are suitable for any commercial setting. Choose your base, then choose your top and create one of many potential combinations!

Please contact your local sales representative for more information.

Frame Finish Options



Bronze (20)



Charcoal (50)



Platinum (70)

Café Tables



MICROMESH TOPS
 2202430-01 • 24" x 30" Rectangle
 2203030-01 • 30" x 30" Square
 2203000-01 • 30" Round



SOLID METAL TOPS
 2212430-01 • 24" x 30" Rectangle
 2213030-01 • 30" x 30" Square
 2213000-01 • 30" Round



ACRYLIC SOLID TOPS
 2413000-01 • 30" round
 2413030-01 • 30" x 30"

Table Bases

Note: All table tops come with umbrella hole EXCEPT the 24" x 30" size



2342700-01
 Butterfly Café Base
 ~ BASE ONLY ~
 29H x 28 diagonal leg spread



2332700-01
 Spun Café Base
 ~ BASE ONLY ~
 29H x 24 diameter base



2335700-01
 Spun Café Bar Base
 ~ BASE ONLY ~
 40H x 24 diameter base

Dining Tables



MICROMESH TOPS
 2203636-01 • 36" x 36" Square
 2203600-01 • 36" Round
 2204200-01 • 42" Round

42" Round tops are not recommended for use with bar table bases.



SOLID METAL TOPS
 2213636-01 • 36" x 36" Square
 2214600-0150 • 46" Round



ACRYLIC SOLID TOPS
 2413600-01 • 36" round
 2413636-01 • 36" x 36"
 2413048-01 • 30" x 48"



2343700-01
 Butterfly Dining Base
 ~ BASE ONLY ~
 29H x 32 diagonal leg spread



2333700-01
 Spun Dining Base
 ~ BASE ONLY ~
 29H x 28 diameter base



2334700-01
 Spun Bar Base
 ~ BASE ONLY ~
 40H x 28 diameter base



2353048-01
 Dining T-base for 30 x 48 top
 ~ BASE ONLY ~
 29H x 32 leg spread

NEW Collection for 2022

Poolside Designs

Treat your guests to the classic outdoor comfort of our NEW poolside designs. The collection features stackable furniture, saving space when not in use, and offers comfortable, stylish options that will hold up against the environment. With an array of combinations with sling colors, as well as frame finish options, these luxurious additions will meet all your hospitality needs!

- Multiple color options for slings
- Multiple color options for frame finishes
- Dining chairs and chaise lounges are all stackable
- Handcrafted in the USA
- 3-year frame warranty
- Recyclable



Sarasota (Shown above)

Transform your outdoor décor by adding the unique style and comfort of the Sarasota collection, combining aluminum tubing and a beautiful design to make each piece stand out in any setting.



4051100-04
Dining Chair
28D x 24W x 35H



4050900-04
Chaise Lounge
77D X 29W X 37H

Miramar

The Miramar collection offers a bold, sleek design that brings sophistication to any patio, pool or restaurant space. Indulge in the luxury of the new age look with the Urban Sling design.



4021100-03
Dining Chair
23D x 25W x 34H



4020900-03
Chaise Lounge
79.5D x 31W x 35.5H

Navarre

Indulge in the luxury of the new age look with the Navarre Sling design. With the sleek straight lines of the all-aluminum frame, an urban feel can be brought to your hospitality space.



4031100-03
Dining Chair
28D x 24W x 35H



4030900-04
Chaise Lounge
78.5D x 25W x 38H

Panama

Featuring a wide arm for increased comfort, the Panama collection provides guests the ultimate in relaxation, striking the perfect balance between comfort and luxury.



4041100-04
Dining Chair
28D x 24.5W x 34.5H



4040900-04
Chaise Lounge
76D x 29.5W x 38.5H

Customize your collection
with various sling colors
and frame options!

Ask rep for details

Poolside Dining

Navarre Table



base 2382700-01
see tops below

Miramar Table



base 2363700-01
see tops below

Sarasota Table



base 2372700-01
see tops below

Sarasota Table



base 2373700-01
see tops below



36" Round Slat
2513600-01



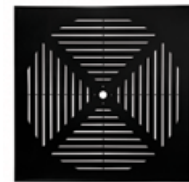
36" x 36" Slat
2513636-01



36" Round Cube
2523600-01



48" Round Slat
2514800-01



48" x 48" Slat
2514848-01



48" Round Cube
2524800-01

Poolside Accessories



20" Poolside Table
20" x 20" x 18"
4082020-01



24" Poolside Table
24" x 24" x 18"
4082424-01



20" Drum Side Table
18" x 18" x 19"
4091800-01



Drum Chat Table
36" x 36" x 19"
4093600-01

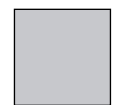
Frame finish options
for all tables
*ask rep for more colors



Charcoal 50



Titanium 54



Platinum 70



Espresso 84



Aluminum Adirondack

Timeless style using aluminum materials make this a beautiful outdoor furniture set, season after season. Choose from all aluminum or aluminum frame with sling.

*Customize your collection with various sling colors and frame options! Ask rep for details

*Decorative pillows not included



4061100-01
All Aluminum
35 x 30W x 36H



4071100-01
Aluminum frame with sling*
30D x 31W x 38H



Features:

- All-aluminum extruded mast, combined with stainless steel parts
- Crank lift for smooth and effortless operation, offering countless angles for shade from the sun
- Full 360 degree rotation
- High impact resin critical joints for greater flexibility
- Wind stabilizer kit and black protective cover bag included

Item numbers:

- 9020-01 10' x 10' square cantilever
- 9021-01 13' octagon cantilever

Finish: Matte Silver (additional powder coat finishes available for an upcharge, contact your local rep for more information)

Edison cantilever umbrellas have been tested successfully in extreme weather conditions up to 35 mph, however we strongly recommend closing your umbrella when not in use. Wind ratings do not form part of, nor fall under any PPCF warranties.

Edison Cantilever Umbrella |

The Edison cantilever umbrella combines style with size, strength and durability for those larger open spaces that need more shade protection from the sunlight. Edison is the sister cantilever to the popular Avalon series, but offered in a larger 13' octagon, and 10' x 10' square size. Like Avalon, it features a full 360 degree rotation and infinity tilt which allow for easy opening and closing. The Edison cantilever features heavy gauge extruded aluminum and stainless steel parts on a marine grade, corrosion resistant aluminum frame, making the Edison cantilever suitable for all commercial applications. The Edison cantilever has a three year frame warranty and is available in additional powder coated frame finishes for an additional cost. Please contact your local representative for further information.



NEW for 2022

Bases and colors on page 27 and 28



Avalon Cantilever Umbrella |

The Avalon cantilever umbrellas provide style with size for the outdoor commercial space. Its 360 degree rotation and multiple tilting angles for easy opening and closing, offer greater flexibility and make this umbrella a great option for shading any commercial environment. Avalon cantilever umbrellas are made of heavy gauge extruded aluminum and stainless steel parts on a marine grade corrosion resistant frame. This cantilever umbrella, available in two sizes, is suitable for use in low to moderate wind conditions and ensures hours of protection from the sun and light rain. The Avalon cantilever frame and frame finish has a 3 year limited commercial warranty.

Features:

- All-aluminum extruded mast is strong and durable, built for strength in any commercial setting.
- Crank lift designed for smooth and effortless operation, providing countless tilt angles for shade from the sun.
- Full 360 degree rotation
- High impact resin critical joints give greater flexibility where needed.
- Wind stabilizer kit and black protective cover bag included.
- 3 year limited warranty on frame

Item numbers:

- | | |
|---------|---------------------------|
| 9018-01 | 9' x 9' square cantilever |
| 9019-01 | 11' octagon cantilever |

Finish: Matte Silver

Avalon cantilever umbrellas have been tested successfully in extreme weather conditions up to 25 MPH, however we strongly recommend closing your umbrella when not in use. Wind ratings do not form part of, or fall under any PPCF warranties.



Bases and colors on
page 27 and 28

Geneva Umbrellas |

The Geneva umbrellas combine luxury with style to create a sophisticated look in any outdoor setting. The sturdy all-aluminum frame and easy glide pulley system allows for effortless opening and closing. Also includes a solid marine grade, chrome-plated aluminum finial for an enhanced appearance.

Features:

- All Aluminum Frame Polished Silver Pole and Ribs, Pulley System w/Locking Pin
- 1.5" diameter two piece aluminum
- 1/8" thickness pole
- Heavy gauge pulley system for easy opening and closing
- Reinforced four-layer pockets prevent fabric from tearing
- Stainless steel hardware
- Solid marine grade chrome plated aluminum finial
- 3 year limited warranty on frame

Item numbers:

- 9115-01 6.5' x 6.5' square
- 9116-01 7.5' x 7.5' square
- 9117-01 7.5' octagon
- 9118-01 9' octagon
- 9119-01 11' octagon



Bases and colors on
page 27 and 28





Features:

- 1.5" diameter all-aluminum 2 pc pole
- 1/2" fiberglass ribs and struts for maximum strength and flexibility
- 1/8" aluminum pole wall thickness for greater strength and durability
- Optional lift systems for easy opening and closing- solid stainless steel crank for CL series
- Reinforced four-layer pockets prevent fabric from tearing
- Stainless steel hardware throughout
- 3 year limited warranty on frame

Item numbers:

Pulley Lift	Crank Lift	
9965PL-01	9965CL-01	6.5' x 6.5' square
9976PL-01	9976CL-01	7.5' x 7.5' square
9975PL-01	9975CL-01	7.5' octagon
9919PL-01	9919CL-01	9' octagon
9911PL-01	9911CL-01	11' octagon

Frame finishes available:

- 72- Matte Silver
- 52- Matte Black
- 21- Bronze

Montego umbrellas have been tested successfully in extreme weather conditions up to 40 MPH, however we strongly recommend closing your umbrella when not in use, or when sustained winds exceed 25 MPH. Wind ratings do not form part of, or fall under any PPCF warranties.

Please refer to page 27 for correlating umbrella bases and 28 for fabric that will accommodate the Montego umbrellas. We recommend all umbrellas be secured with an authorized umbrella base.

Montego Umbrellas |

The Montego umbrellas offer exceptional durability and design for the outdoor environment, offered in 3 different frame finish colors and 4 different sizes. The all-aluminum pole and durable fiberglass ribs allow for greater flexibility in stronger winds. Montego has two lift options, a pulley system design with a locking hook to secure upper frame into pole and keep cord out of reach when in use. There is also a solid stainless-steel handle option for manually cranking the umbrella to its upright position. The Montego umbrella is designed to last and will give your outdoor space an elegant look for years to come. The Montego frame and frame finish has a 3 year limited commercial warranty. The manual crank mechanism is warranted for 2 years.



Promenade Umbrellas |

The Promenade umbrellas are simple in design yet provide the classic traditional look for your every day market umbrella needs. The 2 piece threaded aluminum pole with fiberglass rib umbrella frame is suitable for any large or small restaurant type properties. The promenade umbrellas will enhance any outdoor patio, and are easy to push upright to multiple desired hole positions, and lock in to place with the attached locking pin. Available in 2 sizes and a wide variety of vibrant Sunbrella colors. Also makes for a nice logo branded umbrella if desired. Promenade umbrellas have a 1 year warranty.

Features:

- All-aluminum threaded 2 pc pole for great support and strength
- 1.5" diameter pole
- Reinforced fiberglass ribbed upper frame
- Stainless steel attached locking pin
- Double stitched two layer pockets to resist fabric tears at pressure points on edges of umbrella
- Replaceable canopies and some parts are available if ever needed
- 1 year limited warranty on frame

Please refer to page 27 for correlating umbrella bases that will accommodate the Promenade umbrellas and page 28 for fabric. We recommend all umbrellas be secured with an authorized umbrella base.



6' Square Aluminum Market
Umbrella with Fiberglass Ribs
and Manual Lift
9602-01 • Black Pole



7' Octagonal Aluminum Market
Umbrella with Fiberglass Ribs
and Manual Lift
9720-01 • Black Pole
9719-01 • Platinum Pole

Umbrella Bases |

Table Use



50 lb. Resin Coated Concrete Base
16" Round
2239850-0170 • Matte Silver
2239850-0150 • Black
2239850-0121 • Bronze



70 lb Galvanized Steel
24" Round
22398070-0170
*other weights available

Freestanding



75 lb. Freestanding
Umbrella Base
24" x 24"
Steel plate base with wheels
2239875-0150 • Black
2239875-0174 • Silver Mist
2239875-0121 • Bronze



80 lb. Freestanding Resin
Coated Umbrella base
Stainless Steel Stem
20.5" R
2239882-0150



100 lb Free standing Concrete
filled Umbrella Base
24" Round
22398100-0174 - Silver Mist



150 lb. Freestanding
Umbrella Base
36" Round
Galvanized Steel Plate
2230150-0170
*other weights available

Cantilever



Direct Surface Mount for
Cantilever Umbrellas
12.5" Round
Avalon 2239812-0150
Edison 2239813-0150



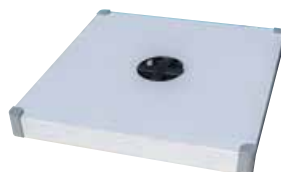
In-Ground Mount for
Cantilever Umbrellas
8" Round
Avalon 2239818-0170
Edison 2239820-0170



Avalon Cantilever Double
Galvanized Steel Plate Base
40" Round
40" x 1", 335 lbs. (two bases stacked)
2233350-0170



Modular Cross Base
for Cantilever Umbrellas
39" x 39"
Holds 2-3 16" pavers per quadrant
Pavers not included
2239816-0150



Base Cover with
Modular Cross Base
40" x 40" (assembly required)
2239817-0174 • Silver Mist
2239817-0152 • Matte Black



Edison Cross Base
with Aluminum Cover
45" x 45"
Pavers included
2235400-0170



Edison Cantilever Triple
Galvanized Steel Plate Base
40" Round
40" x 2", 555 lbs
(three bases stacked)
2235550-0170



We offer Sunbrella canvas solids that are 7 ounce 100% upholstery grade, solution-dyed acrylic material. Sunbrella offers a 5 year warranty on fading under normal atmospheric conditions.

***Ask your sales rep for fabric lead time. More colors may be available for your choosing.

- Canvas Antique Beige 5422
- Canvas Heather Beige 5476
- Canvas Teak 5488
- Canvas Bay Brown 5432
- Canvas Henna 5407
- Canvas Brick 5409
- Canvas Jockey Red 5403
- Canvas Tuscan 5417
- Canvas Sunflower 5457
- Canvas Wheat 5414
- Canvas Parrot 5405
- Canvas Forest Green 5446
- Canvas Teal 5456
- Canvas Aruba 5416
- Canvas Pacific Blue 5401
- Canvas Sapphire Blue 5452
- Canvas Navy 5439
- Canvas Black 5408
- Canvas Charcoal 54048
- Canvas Granite 5402



We offer Recacril fabric which is a 9 ounce 100% marine grade, solution-dyed acrylic material. Recacril offers a 7 year warranty on fading under normal atmospheric conditions.

***Ask your sales rep for fabric lead time. More colors may be available for your choosing.

- BGA: Burgandy
- BKA: Black
- BNA: Brown
- CGA: Cadet Grey
- CHGA: Charcoal
- CPA: Capri
- CRA: Coral
- FGA: Forest Green
- LNA: Linen
- LRA: Logo Red
- NBA: Navy Blue
- ORA: Orange
- PBA: Pacific Blue
- PTA: Pistachio
- TQA: Turquios
- WHA: White
- YLA: Sunflower
- TRA: Terracotta
- YSA: Yellow Stripe
- BKSA: Black Stripe
- BSA: Blue Stripe
- OSA: Orange Stripe
- RSA: Red Stripe
- TQSA: Turquoise Stripe



CUSTOMIZE YOUR UMBRELLA!

Choose a solid color, alternate panels or make a complete rainbow with your choice of fabrics!

And for optimal attention,
LOGO YOUR UMBRELLA
for a complete look!

Logos may be applied to any umbrella.

- Vectorized .EPS or .AI file is preferred format for artwork. PDF, PSD or high resolution JPEG is also acceptable.
- Artwork must be approved by customer.

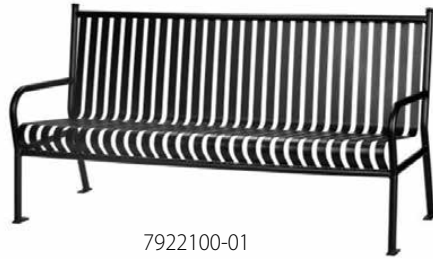


Accessories

We are pleased to offer our heavy duty benches and waste receptacle, built for any outdoor public area. Each piece of our accessories collection is constructed of commercial-grade steel, and finished with a durable powder coated charcoal finish.



7927800-02
Waste Receptacle
with Rain Bonnet
27.5W x 27.5W x 31H
offered in charcoal and bronze



7922100-01
6' Bench
72W x 27D x 38H
offered in charcoal and bronze



2552000-0250
Bench
18D x 50W x 17H



End view
of Bench

Closeouts

Discontinued or limited stock items. Please contact your local representative for availability.

Metro

Metro Dining Chair
2331100-0420
25D X 21.75W x 33H
bronze only



Madrid

Madrid Bar Stool
8750300-0240
20.5W x 25D x 47H



Newport

Newport Side Chair
2240700-04
24D X 21W x 37H
bronze only



Metro Bar Stool
2330300-0420
2330300-0450
2330300-0470
19.5D X 21W x 45H
bronze, charcoal
and platinum



Madrid Bar Table
87536BT-0140 36W x 40H
chocolate finish only
with umbrella hole



Newport Bar Stool
2240300-02
23.5D X 22.5W x 48H
charcoal and bronze



Fino

Fino Dining Chair
2641100-0433
21Dx22.75Wx34.5H
champagne/mocha
weave seat and back



Rockport

Rockport Bar Stool
2040300-02
26D X 22.5W x 45H
bronze, charcoal
and platinum



Austin

Austin Bar Stool
8190300-0171
15D X 15.5 X 43H



Tables

2344737-01
36" Square Butterfly Bar Table
with Mesh Top
36W x 36D x 40H
platinum only



2344736-01
36" Round Butterfly Bar Table
with Mesh Top
36W x 40H
platinum and java only



2192727-0150
Solid Stamped Folding Table
27W x 27W x 29H
charcoal only



2345700-01
Bar Table Base
BASE ONLY
39H x 28 diagonal
leg spread
platinum and bronze only



2344700-01
Bar Table Base
BASE ONLY
39H x 32 diagonal
leg spread
platinum and bronze only



Werzalit

Werzalit TOPS ONLY
Variety of sizes and colors still available. Ask
your sales rep for availability.



Cortez Table



Rectangular Table
4443663-01
36 x 63 x 29H
bronze or graphite



Square Table
4443636-01
36 x 36 x 29H
bronze or graphite

Napa

Dining Chair
4261100-0456
26D x 24.5W x 38H



Caribe

Dining Chair
4271100-0452
24.5D x 23.5 x 34





FURNITURE FRAME WARRANTY

Plantation Prestige Commercial Furniture extends a 3 year limited warranty for our frames to the original end use purchaser as a sign of our dedication to the highest possible quality standards. The warranty is non-transferable and is designed to cover the furniture under normal commercial use.

The extent of the warranty is to cover the material and/or workmanship of the furniture frame and welds. This warranty does not apply to umbrellas, cushions, alternative tops or fabrics.

ALTERNATIVE TOPS, CUSHIONS, FAUX WOOD SLATS and FABRIC SLINGS WARRANTY

Plantation Prestige Commercial Furniture extends a 1 year limited warranty to the original end use purchaser as a sign of our dedication to the highest possible quality standards. This warranty is non-transferable and is designed to cover the construction of the alternative tops, cushions, slats and slings under normal commercial use.

UMBRELLA WARRANTY

Plantation Prestige Commercial Furniture extends a 3 year limited warranty to the original end use purchaser as a sign of our dedication to the highest possible quality standards for the Avalon, Edison, Geneva and Montego umbrella frame and frame finish. If the umbrella is a crank lift, then a 2 year warranty applies to the crank. Promenade umbrellas will have a 1 year warranty to the frame and frame finish. All umbrellas should use a Plantation Prestige Commercial Furniture authorized base. Failure to do so could result in voided warranty.

*****WARRANTY GUIDELINES**

All warranties become void if the furniture has been abused, inadequately maintained, or altered in any way. The warranty also becomes void in the event the furniture has been damaged by acts of nature, calamity and/or misuse. (for example, sunlight refraction on faux wood slats)

If the product is proven to be factory defective, as covered by the warranty, Plantation Prestige Commercial Furniture will repair or replace it at the factory's discretion. In the event the product has been discontinued, Plantation Prestige Commercial Furniture may replace the product with a similar item. All shipping, delivery and packaging costs are the sole responsibility of the owner of the furniture.

TO PLACE AN ORDER

Please submit purchase orders through your local sales rep or contact Plantation Prestige directly for information regarding placing an order. Purchase orders must include part numbers, frame finish, fabric choice, net purchase cost and freight. All freight costs must be applied to order if not being shipped "freight collect." Plantation Prestige uses multiple shipping locations. Please ask your sales rep if specifics are needed. Full payment required for all orders prior to shipping, unless credit terms have been established. Custom orders may require a deposit and are noncancellable.

TO MAKE A CLAIM

To make a claim under this warranty, please contact Plantation Prestige Commercial Furniture. All claims for this service must be accompanied by a proof of purchase, photos of defective product and a detailed description of the defect. All Custom Orders are considered final, and deemed not refundable; however, warranty claims may be submitted following the same guidelines as stated herein.

CUSTOM ORDERS:

The term "Custom Orders" applies to all items not stocked on a regular basis by Plantation Prestige Commercial Furniture. Items that are special ordered are namely cushions, slings and umbrellas due to the use of fabric not carried in-house, as well as any alteration or logo applied to the umbrella. Custom Order items are not refundable; however, claims for defect may be made to our claims department following our standard guidelines.

FREIGHT CLAIMS:

For products shipped 3rd party by Plantation Prestige, all freight claims must include correct paperwork from delivery. All claims must be filed within 48 hours so please inspect product upon arrival.

PLANTATION PRESTIGE COMMERCIAL FURNITURE

5510 HWY 280, Suite 207

Birmingham, AL 35242

205-593-4978

custserv@plantationprestige.com

visit us at plantationprestige.com



Durango Collection

visit us at plantationprestige.com